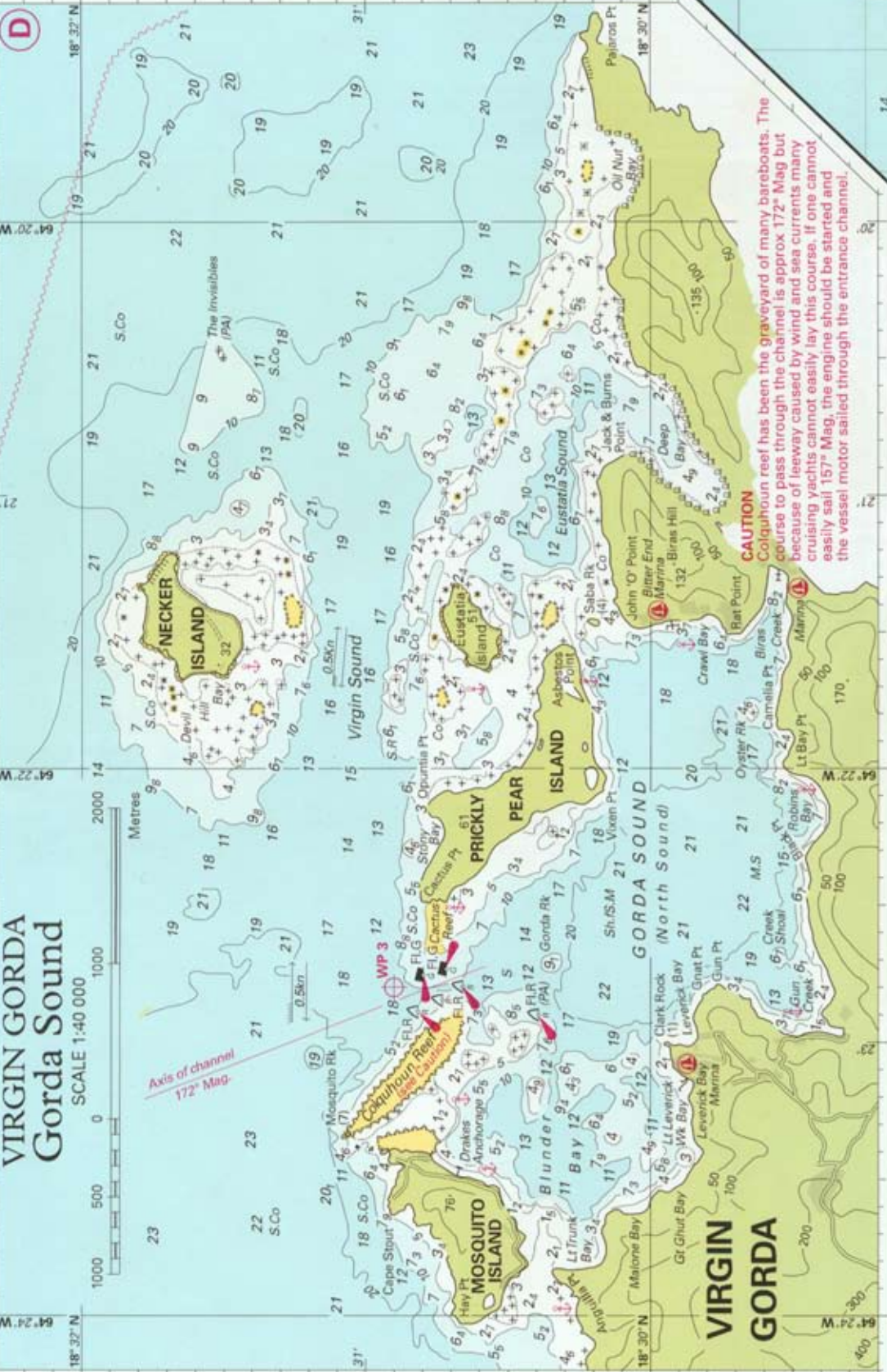


D

# VIRGIN GORDA Gorda Sound

SCALE 1:40 000

64° 24' N  
18° 37' N



Axis of channel  
172° Mag.

**CAUTION**  
Colquhoun reef has been the graveyard of many bareboats. The course to pass through the channel is approx 172° Mag but because of leeway caused by wind and sea currents many cruising yachts cannot easily lay this course. If one cannot easily sail 157° Mag, the engine should be started and the vessel motor sailed through the entrance channel.